

County Profile Contact (919) 715-6374

Commerce Economic Development Contact (919) 733-4977

Demographics

Population & Growth

	Population	Annual Growth Rate
2014 Total Population	60,987	0.2%
2009 Total Population	60,354	0.4%
2000 Total Population	58,100	
July 2008 Certified Population Estimate	59,714	
July 2008 Certified Population Growth	1,614	
July 2008 Certified Net Migration	493	

Urban/Rural Representation

	Population	Urban/Rural Percent
2000 Total Population: Urban - inside Urbanized Area	0	0.0%
2000 Total Population: Urban - inside Urbanized Clusters	18,739	32.3%
2000 Total Population: Rural - Farm	962	1.7%
2000 Total Population: Rural - Nonfarm	38,399	66.1%

Estimated Population by Age

	Population	Pop by Age, % Est.
2014 Median Age	41	
2009 Median Age	40	
2000 Median Age	37	
2009 Total Pop 0-19	15,708	26.0%
2009 Total Pop 20-29	6,837	11.3%
2009 Total Pop 30-39	8,010	13.3%
2009 Total Pop 40-49	9,148	15.2%
2009 Total Pop 50-59	8,273	13.7%
2009 Total Pop 60+	12,378	20.5%

Working Commuters, 2000 Census

Workers, Travel Time

Avg Travel Time, Not at Home	25
Workers Not Working at Home	26,841
Travel Time to Work: < 5 minutes	1,052
Travel Time to Work: 5-9 minutes	3,628
Travel Time to Work: 10-14 minutes	4,809
Travel Time to Work: 15-19 minutes	4,055
Travel Time to Work: 20-24 minutes	3,157
Travel Time to Work: 25-29 minutes	1,104
Travel Time to Work: 30-34 minutes	2,753
Travel Time to Work: 35-39 minutes	573
Travel Time to Work: 40-44 minutes	581
Travel Time to Work: 45-59 minutes	2,543
Travel Time to Work: 60-89 minutes	1,843
Travel Time to Work: 90+ minutes	743

Workers, By Transportation

Worker Mode, Base	27,488
Work at Home	647
Drove Car/Truck/Van Alone	22,548
Carpooled Car/Truck/Van	3,638
Bus/Trolley Bus	14
Streetcar/Trolley Car	10
Subway/Elevated	0
Railroad	16
Ferryboat	2
Taxicab	24
Motorcycle	6
Bicycle	41
Walked	444
Other Means	98

Travel to Work

	Commuters	Percent by Residence
Worked in State/County of Residence	18,742	68.2%
Worked in State/Outside County of Residence	8,536	31.1%
Worked Outside State of Residence	210	0.8%

Education

		Pop Age 25+, %
2008-09 Kindergarten-12th Enrollment	9,551	
2009 Average SAT score (2400 scale)	1,423	
2009 Percent of Graduates taking SAT	5E3%	
2007-08 Higher Education Completions	1,201	
2007-08 Higher Education Total Enrollment	6,521	
2009 Proj Education Attainment - At Least High School Graduate	31,955	77.5%
2009 Proj Education Attainment - At Least Bachelor`s Degree	5,759	14.0%

Housing

		Growth / Appreciation Est
2014 Total Housing	26,843	1.2%
2009 Total Housing	26,512	
2013 Median Value of Owner Occupied Housing	\$126,683	6.1%
2008 Median Value of Owner Occupied Housing	\$119,423	41.9%
2009 Owner Occupied Housing	17,740	
2009 Renter Occupied Housing	5,551	
2009 Total Households	23,291	
2000 Median Year Housing Structure Built	1969	

Income

		Growth Est or Total %/ Percent
2014 Median Family Income	\$54,853	2.4%
2009 Median Family Income	\$53,587	21.5%
2000 Median Family Income	\$44,110	
2014 Median Household Income	\$46,314	2.4%
2009 Median Household Income	\$45,248	22.5%
2000 Median Household Income	\$36,941	
2009 Median Disposable Income	\$35,790	
2009-2014 Per Capita Income: Annual Compound Growth Rate %		0.6%
2014 Per Capita Income	\$21,810	2.8%
2009 Per Capita Income	\$21,224	19.1%
2000 Per Capita Income	\$17,825	
2000 Total Pop with Income Below Poverty Level	6,030	
2000 Percent of Pop with Income Below Poverty Level		10.7%

Employment / Unemployment

	Year to Date	2008 Annual
2009Q3 Employment	27,032	28,009
2009Q3 Unemployment	3,666	2,022
2009Q3 Unemployment Rate	11.9%	6.7%
2009Q3 Announced Job Creation	.	191
2009Q3 Total Announced Investments (\$mil)	.	\$30
Dec2009 Lost Jobs, Closings & Layoffs	122	28
Dec2009 Establishment Events, Closings & Layoffs	4	2

Employment / Wages by Industry

	2009 2nd Qtr Employment	2008 Annual Employment	2009 2nd Qtr Avg Weekly Wage	2008 Avg Weekly Wage
Total All Industries	18,372	19,447	\$567	\$580
Total Government	3,373	3,295	\$667	\$676

Total Private Industry	14,405	15,570	\$545	\$561
Agriculture Forestry	0	0	.	.
Fishing & Hunting				
Mining	0	0	.	.
Utilities	69	69	\$1,022	\$1,214
Construction	1,048	1,216	\$641	\$652
Manufacturing	3,224	3,960	\$685	\$710
Wholesale Trade	510	527	\$696	\$750
Retail Trade	2,578	2,555	\$423	\$429
Transportation and Warehousing	167	247	\$805	\$753
Information	117	122	\$576	\$638
Finance and Insurance	364	369	\$752	\$770
Real Estate and Rental and Leasing	95	136	\$487	\$506
Professional and Technical Services	282	313	\$891	\$822
Management of Companies, Enterprises	154	141	\$834	\$787
Administrative and Waste Services	435	601	\$407	\$363
Educational Services	1,898	1,839	\$637	\$672
Health Care and Social Assistance	2,820	2,813	\$587	\$578
Arts, Entertainment and Recreation	116	128	\$230	\$222
Accommodation and Food Services	1,589	1,534	\$221	\$217
Other Services Ex. Public Admin	588	594	\$332	\$371
Public Administration	1,676	1,656	\$698	\$672
Unclassified	50	45	\$430	\$495

Commercial/Retail/Industrial

Local Businesses

2010 Available Industrial Buildings	6
2008 Establishments: Total Private Industry	1,365
2008 Establishments: Manufacturing	100

Local Retail Business

2009 Total Retail Sales (With Food/Drink) (\$mil)	\$349.3
2009 Total Retail Businesses (With Food/Drink)	538
2009 Avg Sales/Business Total (with Food/Drink)	\$649,194

Quality of Life

Taxes

FY2009-10 Property Tax Rate per \$100 Value	\$0.6700
FY2008-09 Annual Taxable Retail Sales (\$mil)	\$450.1
2010 Tier designation	2

Childcare

Sep2009 Licensed Child Care Facilities	55
Sep2009 Licensed Child Care Enrollment	1,634

Weather

Annual Rainfall	59
Annual Snowfall	6
Average Annual Temperature	56
Average Annual High Temperature	69
Average Annual Low Temperature	43

Healthcare Providers

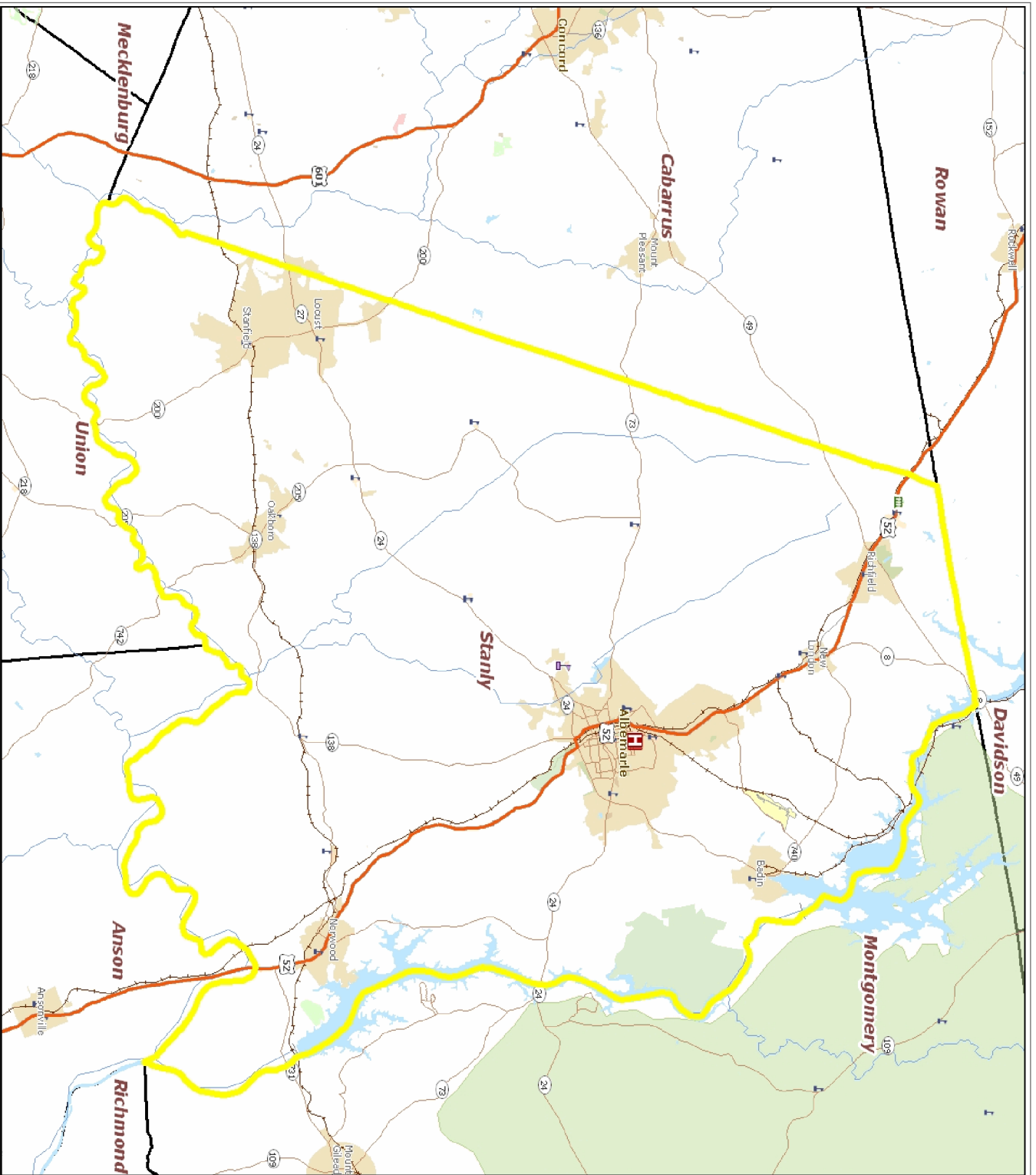
2008 Number of Physicians	72
2008 Physicians per 10,000 population	12.1
2008 RNs per 10,000 population	68.5
2008 Dentists per 10,000 population	2.7
2008 Pharmacists per 10,000 population	7.5

Sources:

ESRI for demographics, working population, educational attainment, housing, income, crime, weather, and retail data. <http://www.esri.com>
 NC Dept. of Education and various state education departments for SAT data by county system. <http://www.ncpublicschools.org>
 US Dept. of Education, National Center for Education Statistics for higher education data. <http://nces.ed.gov/ipeds/>
 NC Commerce for announced new jobs and investment, NC tiers, and number of industrial buildings. <http://www.nccommerce.com/en>
 NC Employment Security Commission for lost jobs and affected establishments data. <http://www.ncesc.com>
 NC Dept. of Health & Human Services for childcare data. <http://www.ncdhhs.gov/>
 UNC Sheps Center for healthcare provider statistics. <http://www.shepscenter.unc.edu/>
 US Bureau of Labor Statistics for employment and unemployment, wages and establishments by industry. <http://www.bls.gov>

Notes:

Data are the latest available at the date the profile was prepared. SAT scores use the new scoring system including a writing test for a perfect score of 2400 and represent county systems. ESRI 2009/2014 data are projections. Some data may be available only for North Carolina. For further details or questions, please check the Data Sources Guide at https://edis.commerce.state.nc.us/docs/bibliography/Data_Sources_Guide.pdf.



Prepared by North Carolina Department of Commerce,
 Division of Policy, Research & Strategic Planning, February 2008

Legend

- Hospital
- Public University
- Private University
- NC Community Colleges
- School
- Limited Access
- Highway
- Major Road
- Local Road
- Minor Road
- Other Road
- Ramp
- Ferry
- Pedestrian Way
- Railroads (Local)
- Airport Area
- Stream
- Intermittent Stream
- Canal
- Dam
- National Park or Forest
- State Park or Forest
- Local Park or Recreation Area
- Municipal Boundaries

